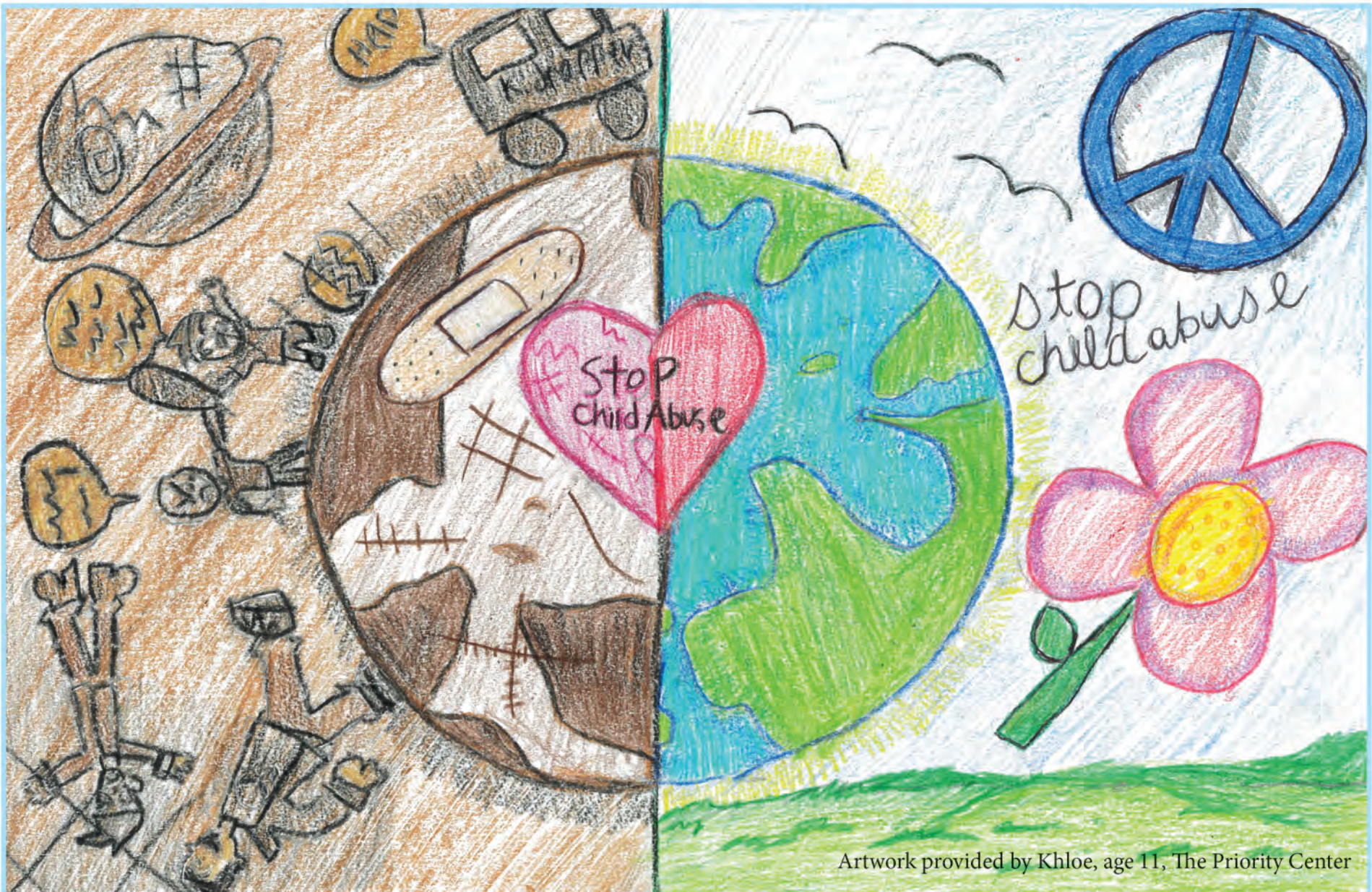


ORANGE COUNTY BUSINESS JOURNAL

Vol. 46, No. 15

THE COMMUNITY OF BUSINESS™

April 10-16, 2023 • \$5.00



Artwork provided by Khloe, age 11, The Priority Center

Last year in Orange County, over 30,000 children were referred to Children and Family Services for reports of child abuse or neglect (and around 29% of these children were age 5 years old and younger).

There are more than 60,000 children in foster care in California.

California continues to have the largest number of children enter this system each year.

The most common type of maltreatment is neglect.



BUCHANAN STREET PARTNERS, L.P.



CATHOLIC CHARITIES OF ORANGE COUNTY



HUMAN OPTIONS

KAISER PERMANENTE. thrive

LUGANO DIAMONDS



MAIL TO:

power crunch



R.D. OLSON CONSTRUCTION



UCI Health

CHILD ABUSE PREVENTION ORGANIZATIONS



1505 E. 17th St, Suite 214
Santa Ana, CA 92705
(714) 619-5151
www.casaoc.org



515 N. Cabrillo Park, Suite 100
Santa Ana, CA 92701
(888) 255-4543
www.all4kids.org



2200 W Orangewood Ave, Ste 240,
Orange CA 92867
714.771.5300
www.friendlycenter.org



2130 E. Fourth St. Suite 200
Santa Ana, CA 92705-3818
(800) 550-CHILD
www.olivecrest.org



The Priority Center
Ending the Generational Cycle of Trauma
1940 E. Deere Ave., Suite 100
Santa Ana, CA 92705
714.543.4333
www.theprioritycenter.org



17 Pasteur
Irvine, CA 92618
949.484.8464
www.tillyslifecenter.org